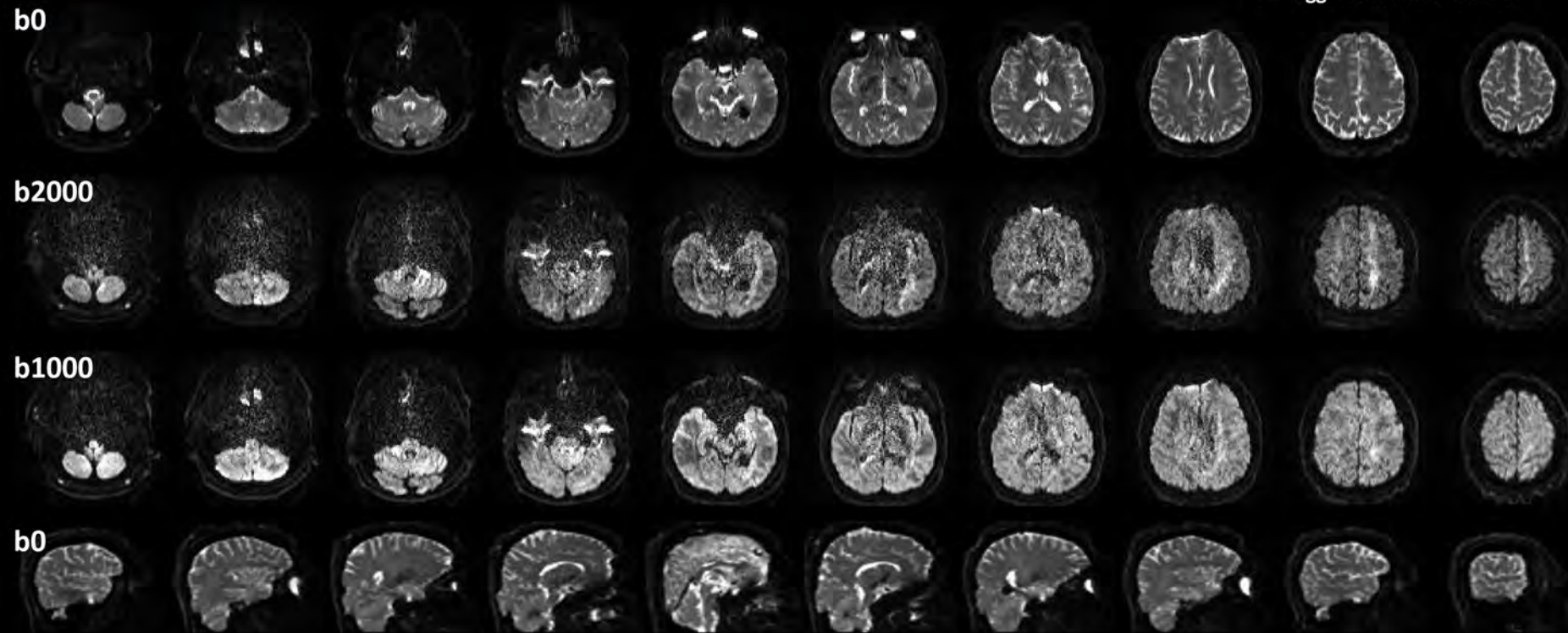


# EPI Distortion Correction: Original

Subject A

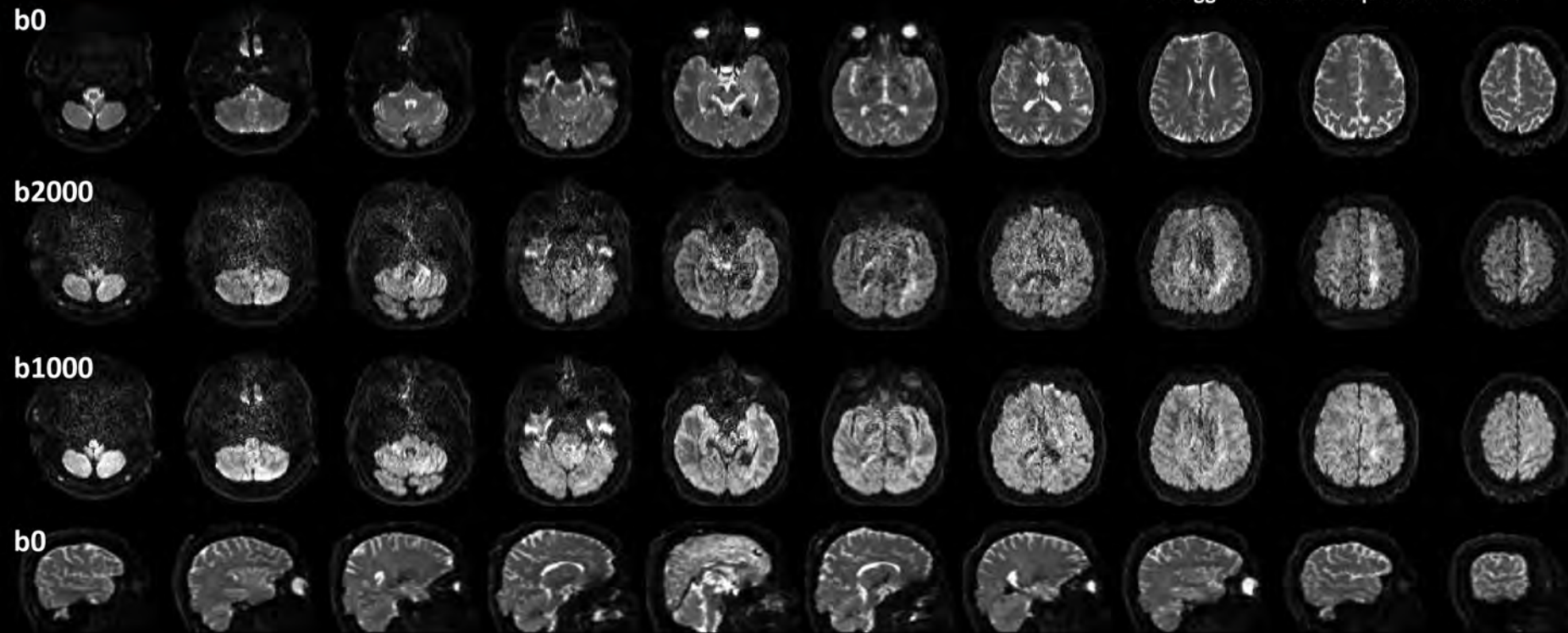
>> toggle with next slide <<



# EPI Distortion Correction: SFC

Subject A

>> toggle with next or previous slide <<

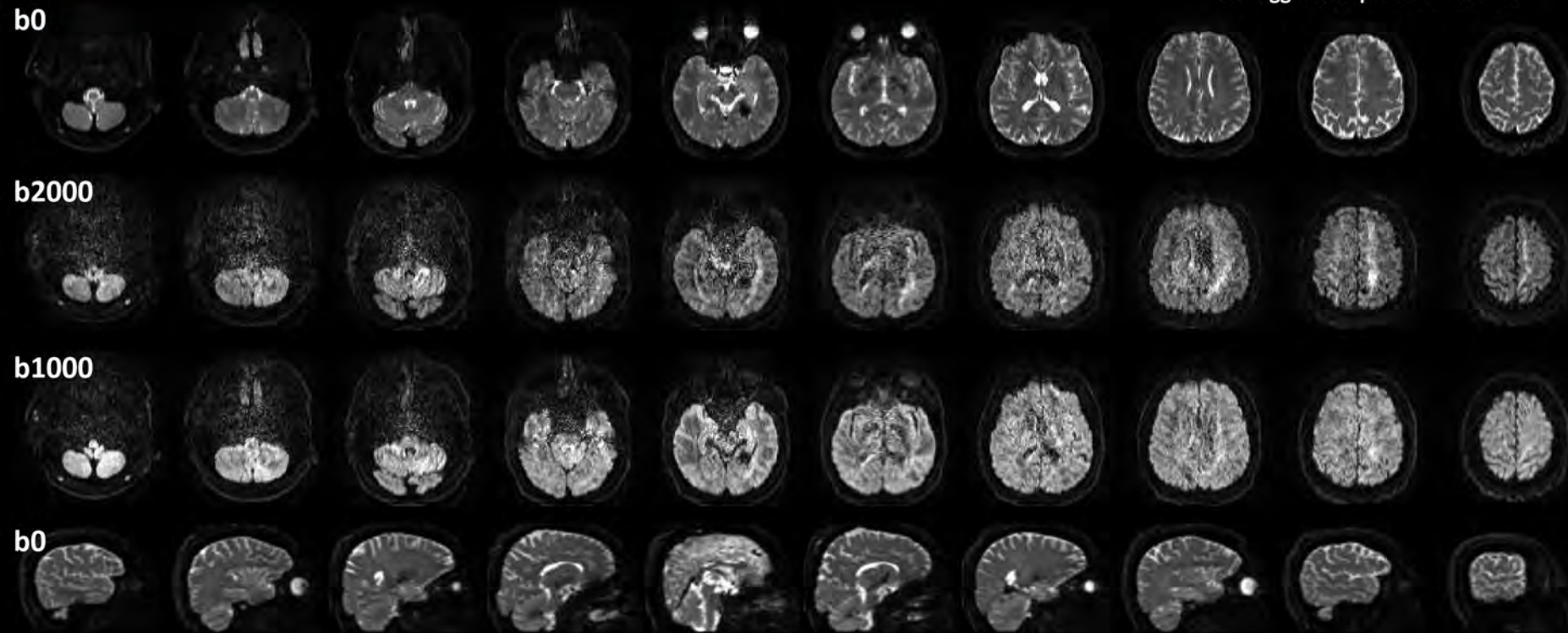


# EPI Distortion Correction: TopUp / Eddy (part of FSL)

(distortion, eddy-current & motion corrected)

Subject A

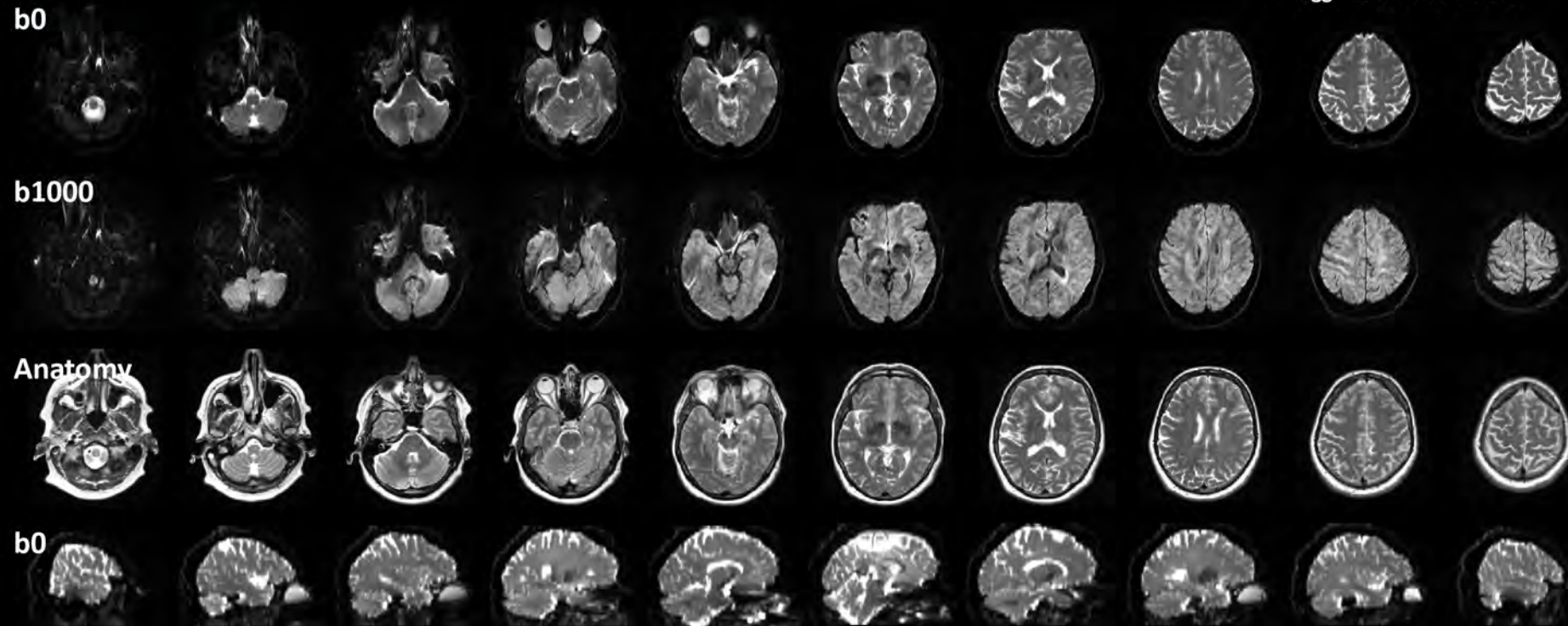
>> toggle with previous slide <<



# EPI Distortion Correction: Original

Subject B

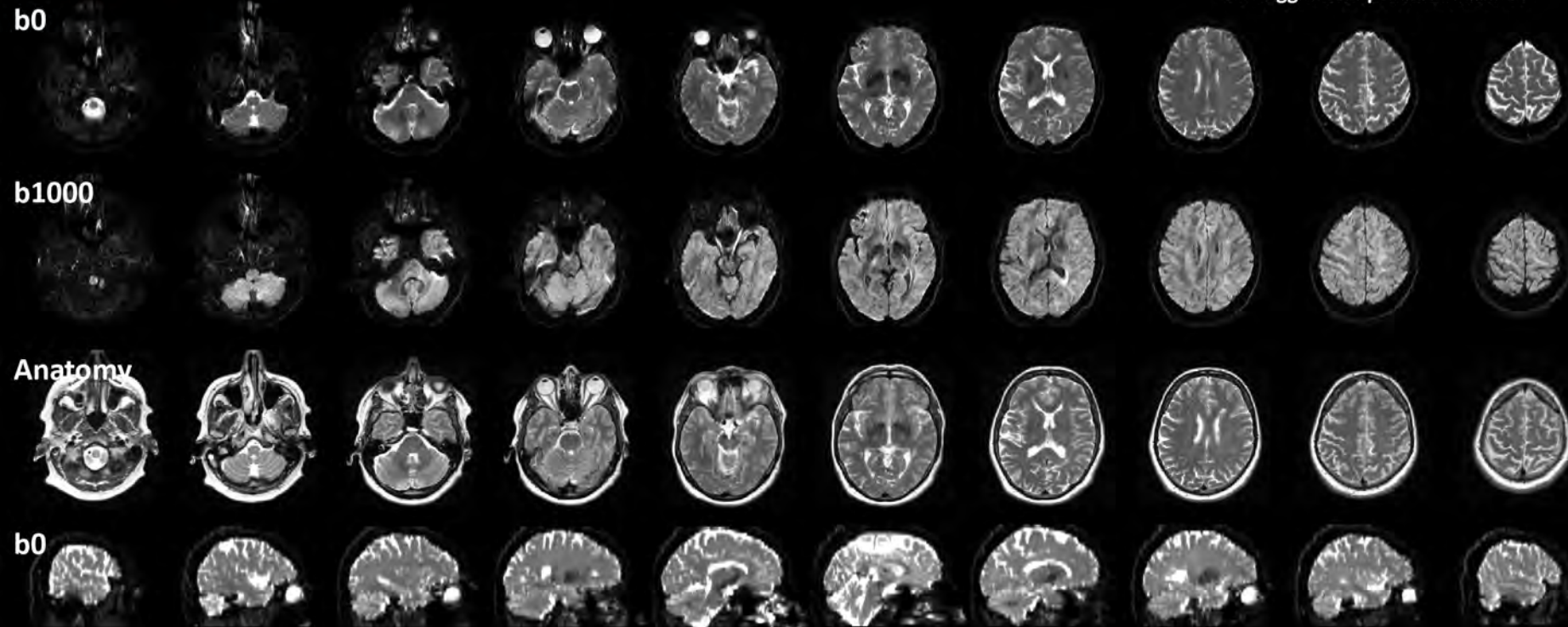
>> toggle with next slide <<



# EPI Distortion Correction: SFC

Subject B

>> toggle with previous slide <<



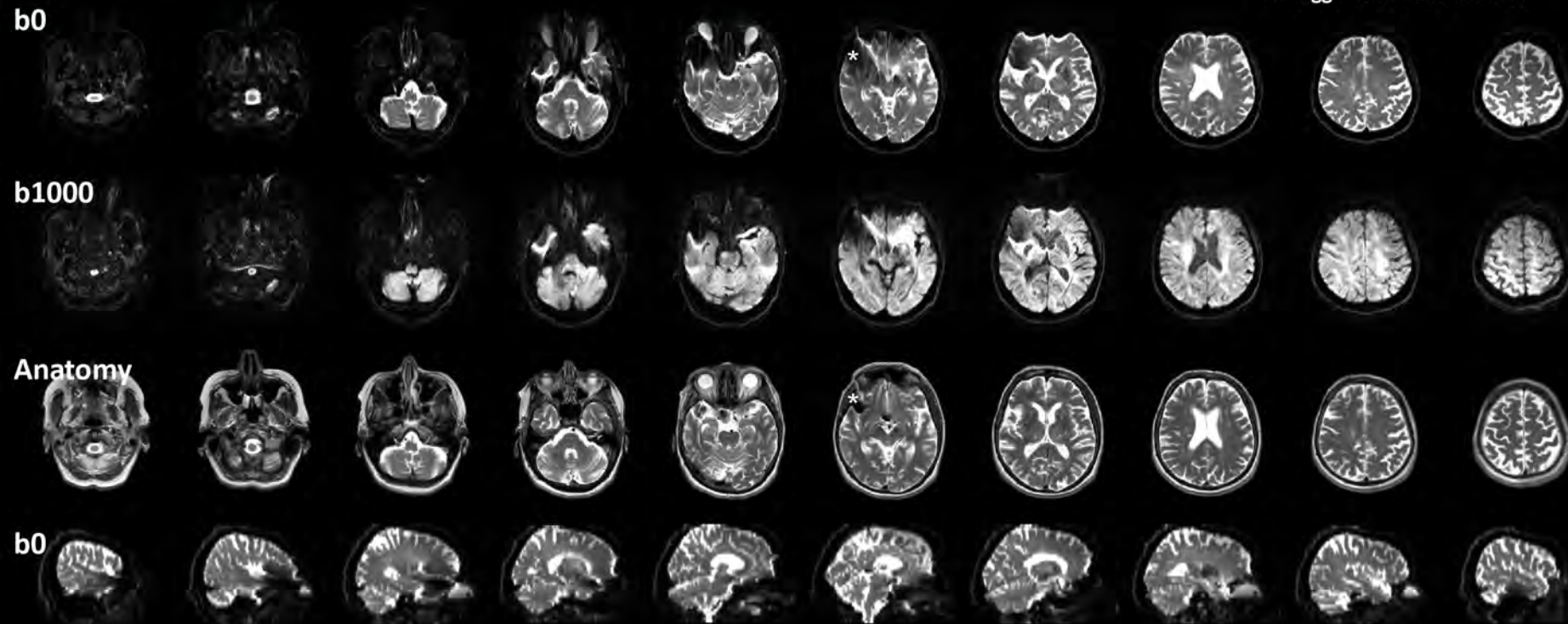
# EPI Distortion Correction: Original

with aneurysm clip (\*)

Courtesy of A.Bartsch, Radiologie Bamberg

Subject C

>> toggle with next slide <<



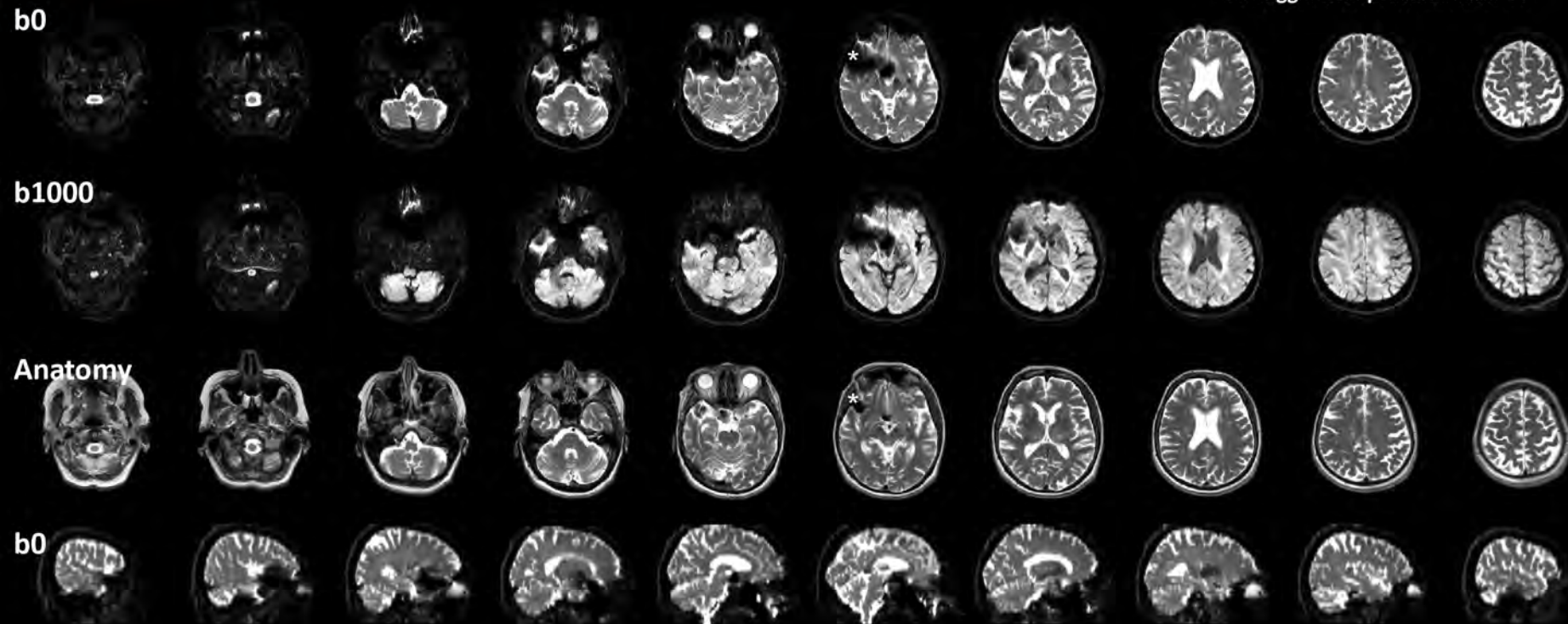
# EPI Distortion Correction: SFC

with aneurysm clip (\*)

Courtesy of A.Bartsch, Radiologie Bamberg

Subject C

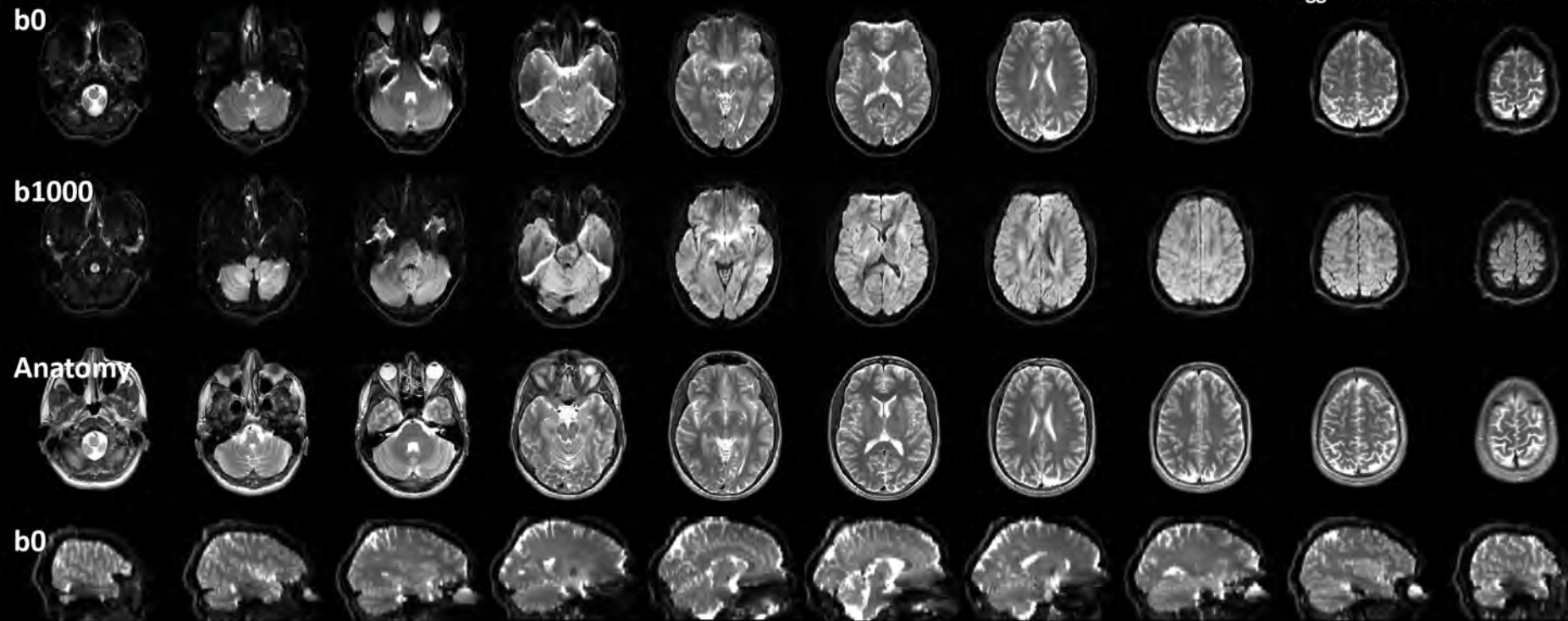
>> toggle with previous slide <<



# EPI Distortion Correction: Original

Subject D

>> toggle with next slide <<

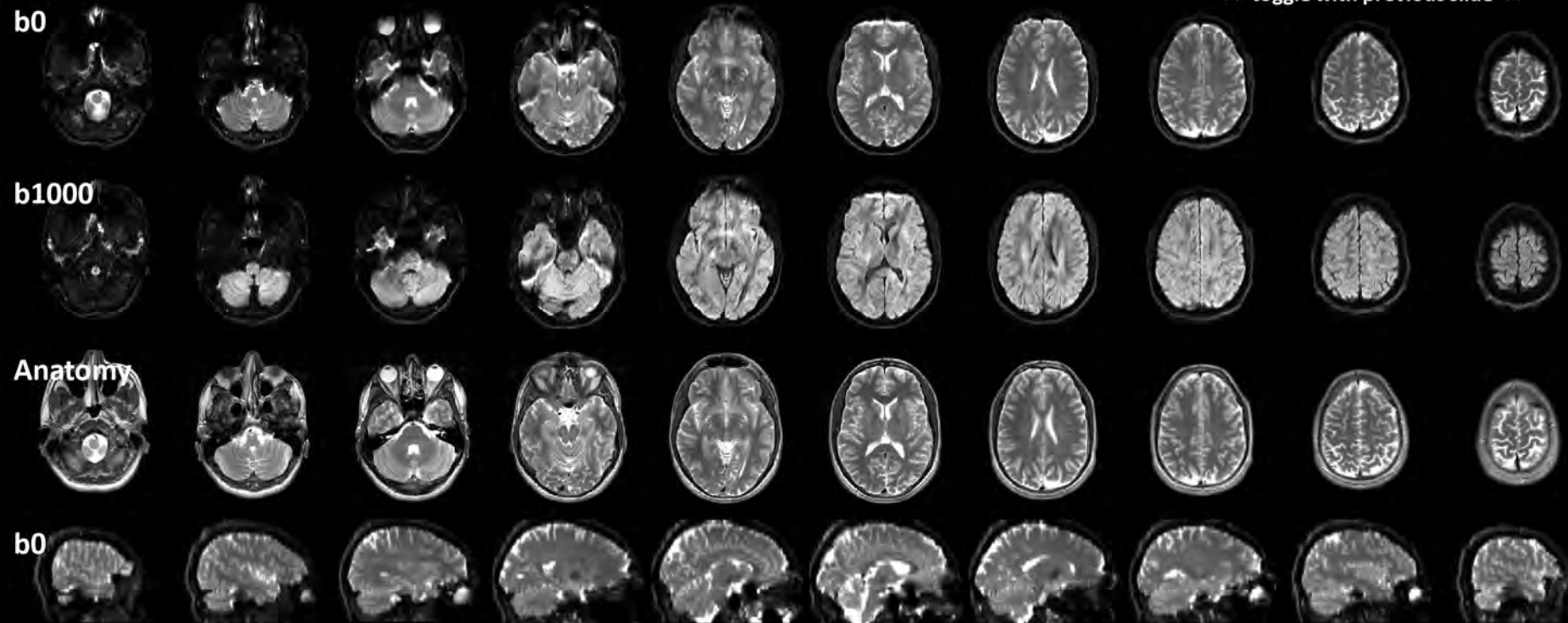




# EPI Distortion Correction: SFC

Subject D

>> toggle with previous slide <<

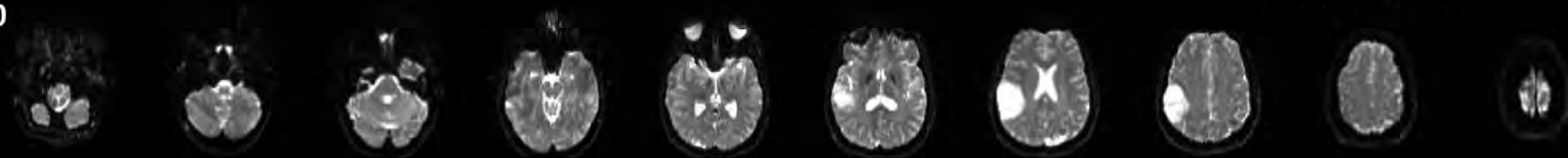


# EPI Distortion Correction: Original

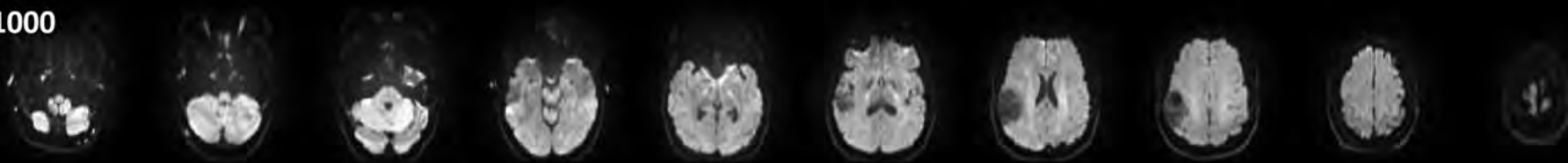
Subject E

>> toggle with next slide <<

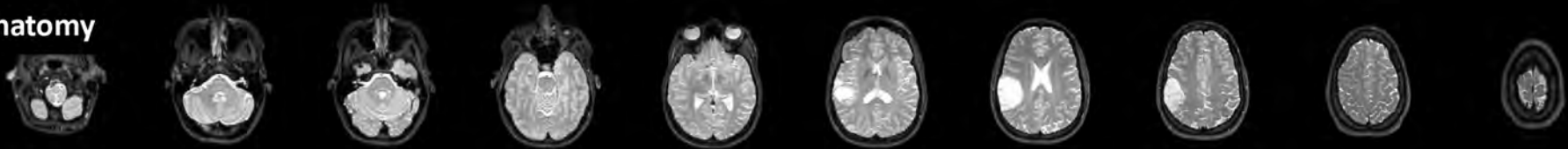
b0



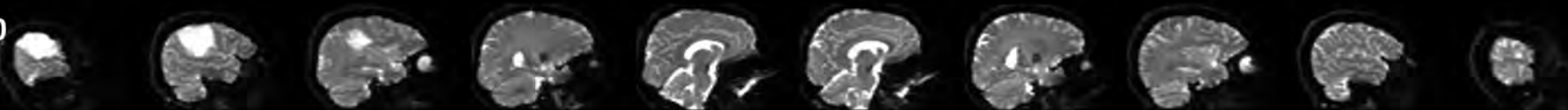
b1000



Anatomy



b0

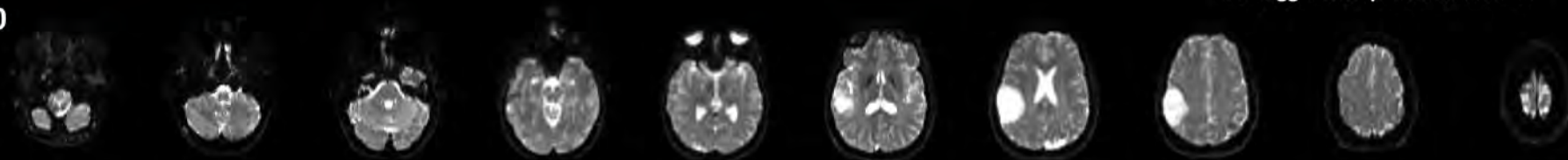


# EPI Distortion Correction: SFC

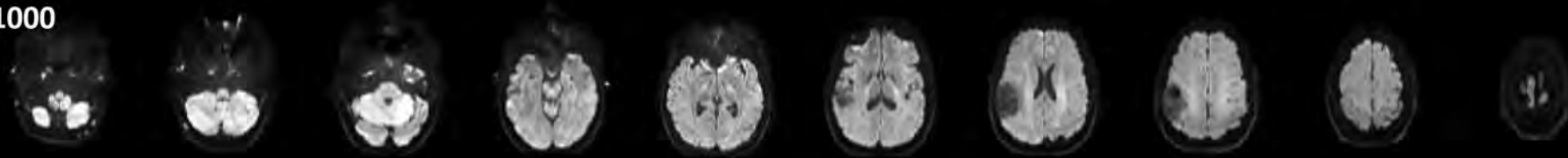
Subject E

>> toggle with previous slide <<

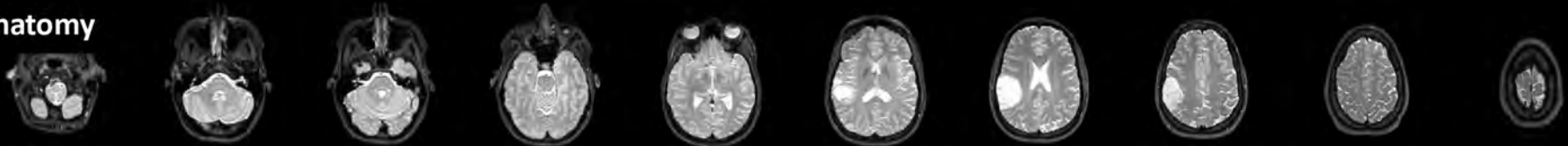
b0



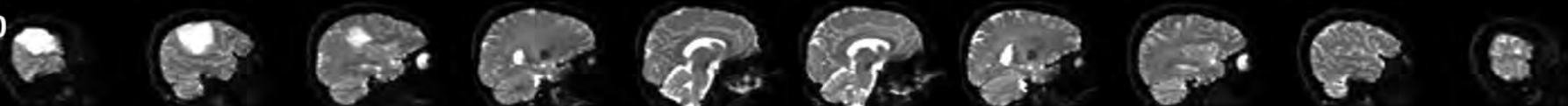
b1000



Anatomy



b0

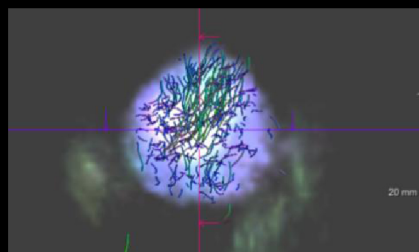
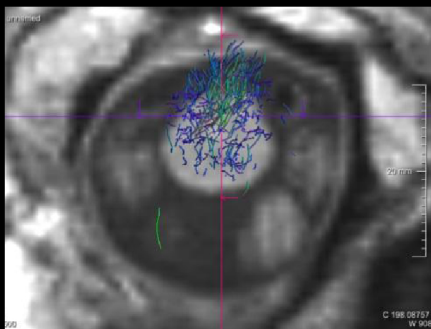
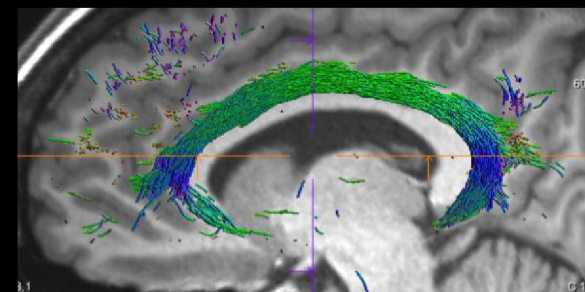
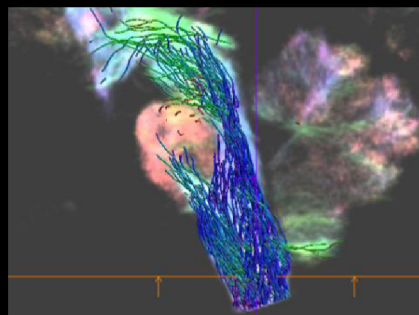
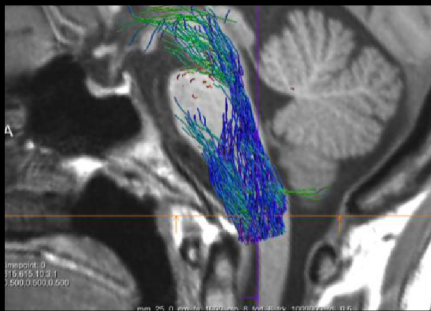


# EPI Distortion Correction: Original

Courtesy of A.Bartsch, Radiologie Bamberg

## Subject E

>> toggle with next slide <<



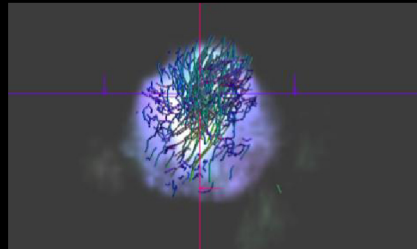
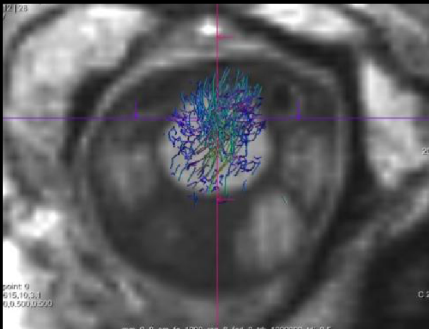
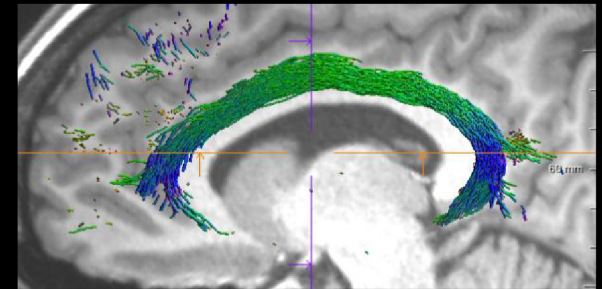
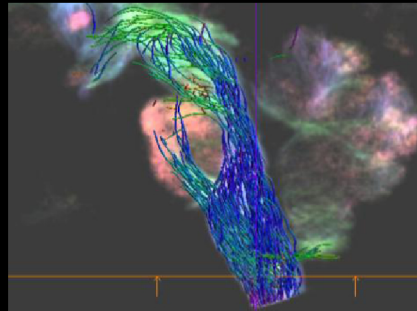
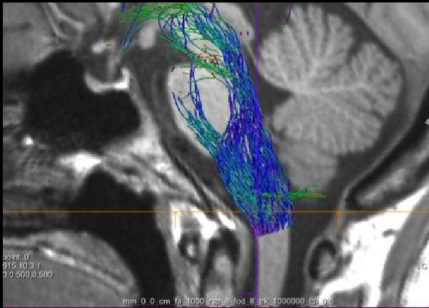
Tractography courtesy of Stefan Huwer,  
Frontier MR TDI Prototype V2.0.3

# EPI Distortion Correction: SFC

Courtesy of A.Bartsch, Radiologie Bamberg

## Subject E

>> toggle with next slide <<



Tractography courtesy of Stefan Huwer,  
Frontier MR TDI Prototype V2.0.3